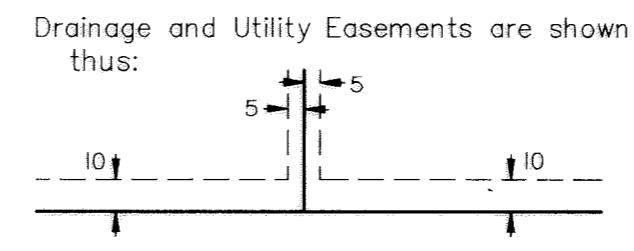
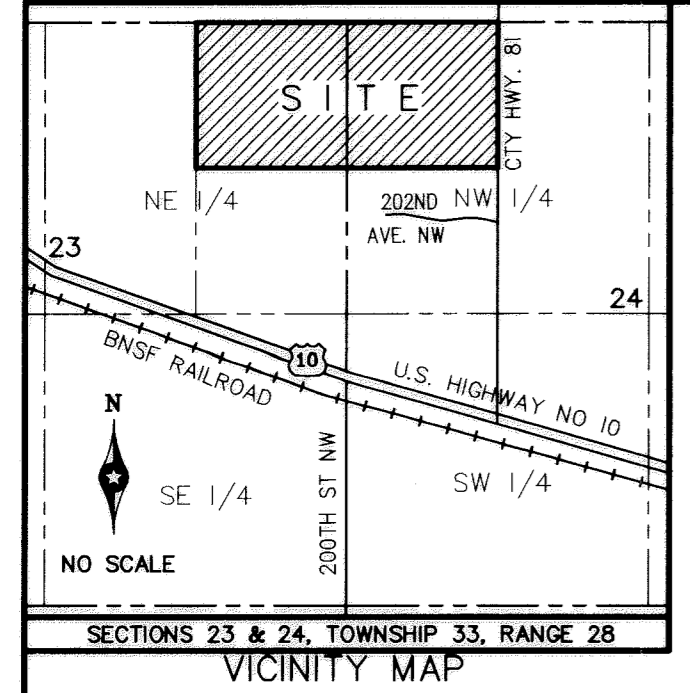


NORLAND PARK FIRST ADDITION

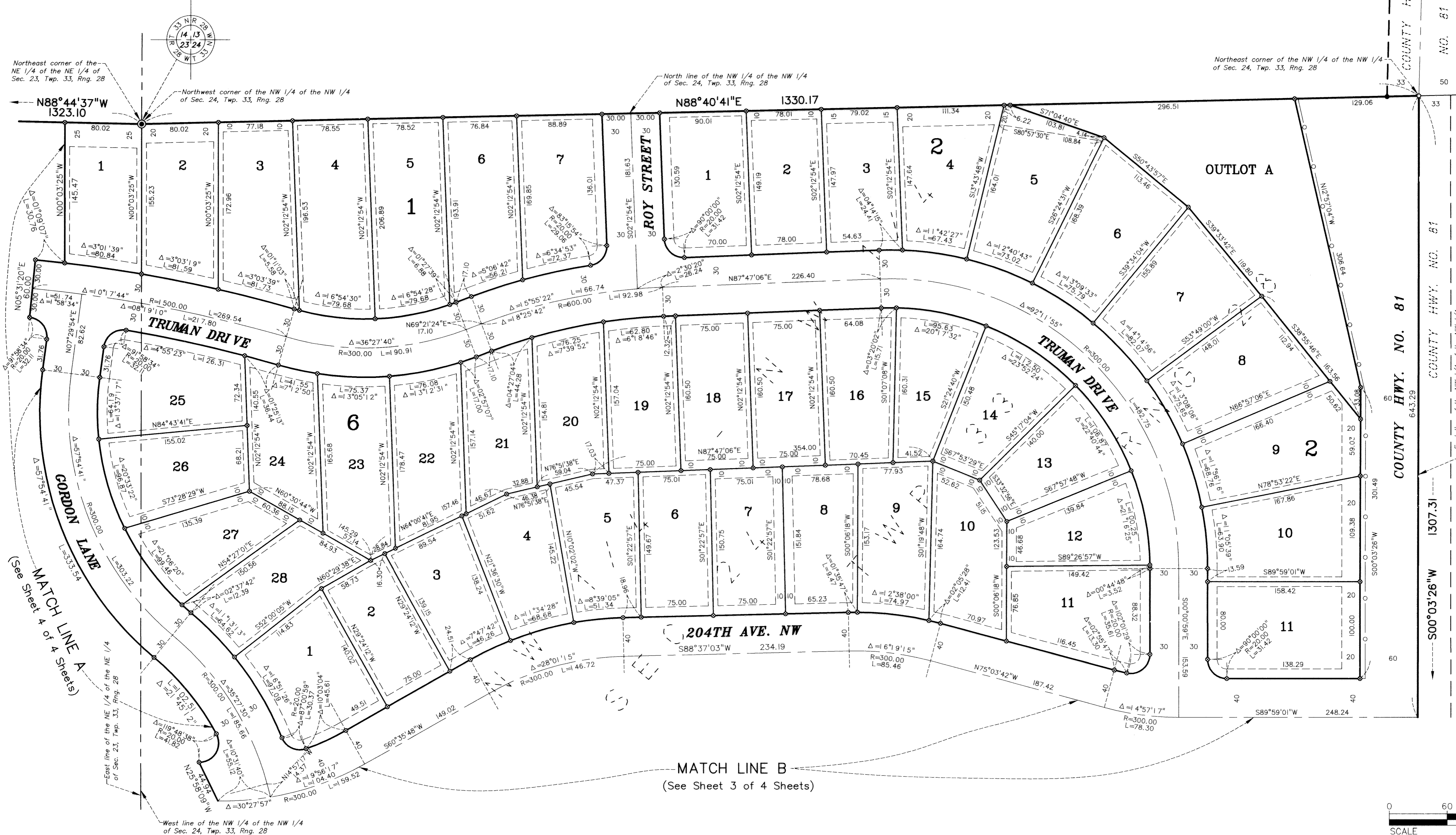
CITY OF BIG LAKE
SHERBURNE COUNTY, MN

For the purposes of this plat, the North line of the NW 1/4, Sec. 24, T. 33, R. 28, is assumed to bear North 88°40'41" East.



- Denotes Limited Access
- Denotes a 1/2 inch x 14 inch iron monument with a plastic plug stamped R.L.S. 42594 to be set within 1 year of recording this plat.
- Denotes a 1/2 inch x 14 inch iron monument with a plastic plug stamped R.L.S. 21729.
- ⊙ Denotes a Sherburne County Monument
- Denotes an iron monument found.

COUNTY HWY. NO. 81
NO. 81
BERNDT PONDS
ESTATES SECOND
ADDITION



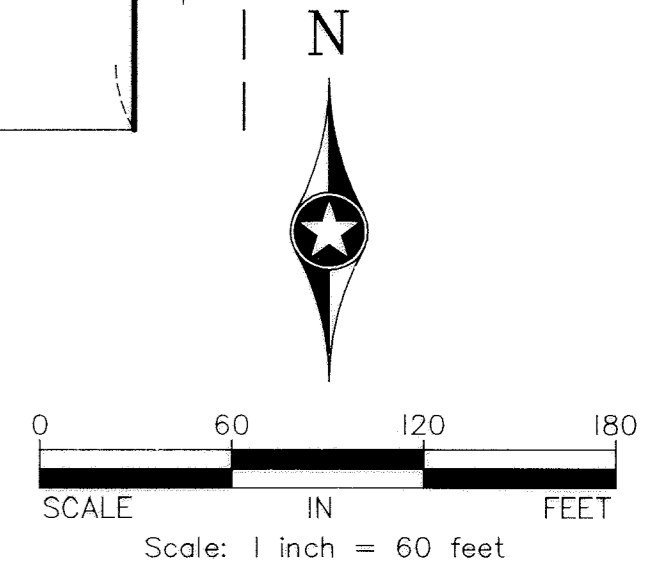
Northeast corner of the NE 1/4 of the NE 1/4 of Sec. 23, Twp. 33, Rng. 28

N88°44'37"W 1323.10

Northwest corner of the NW 1/4 of the NW 1/4 of Sec. 24, Twp. 33, Rng. 28

Northeast corner of the NW 1/4 of the NW 1/4 of Sec. 24, Twp. 33, Rng. 28

East line of the NW 1/4 of the NW 1/4 of Sec. 24, Twp. 33, Rng. 28



John Oliver & Associates