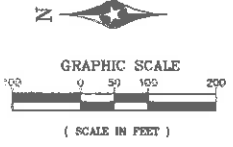
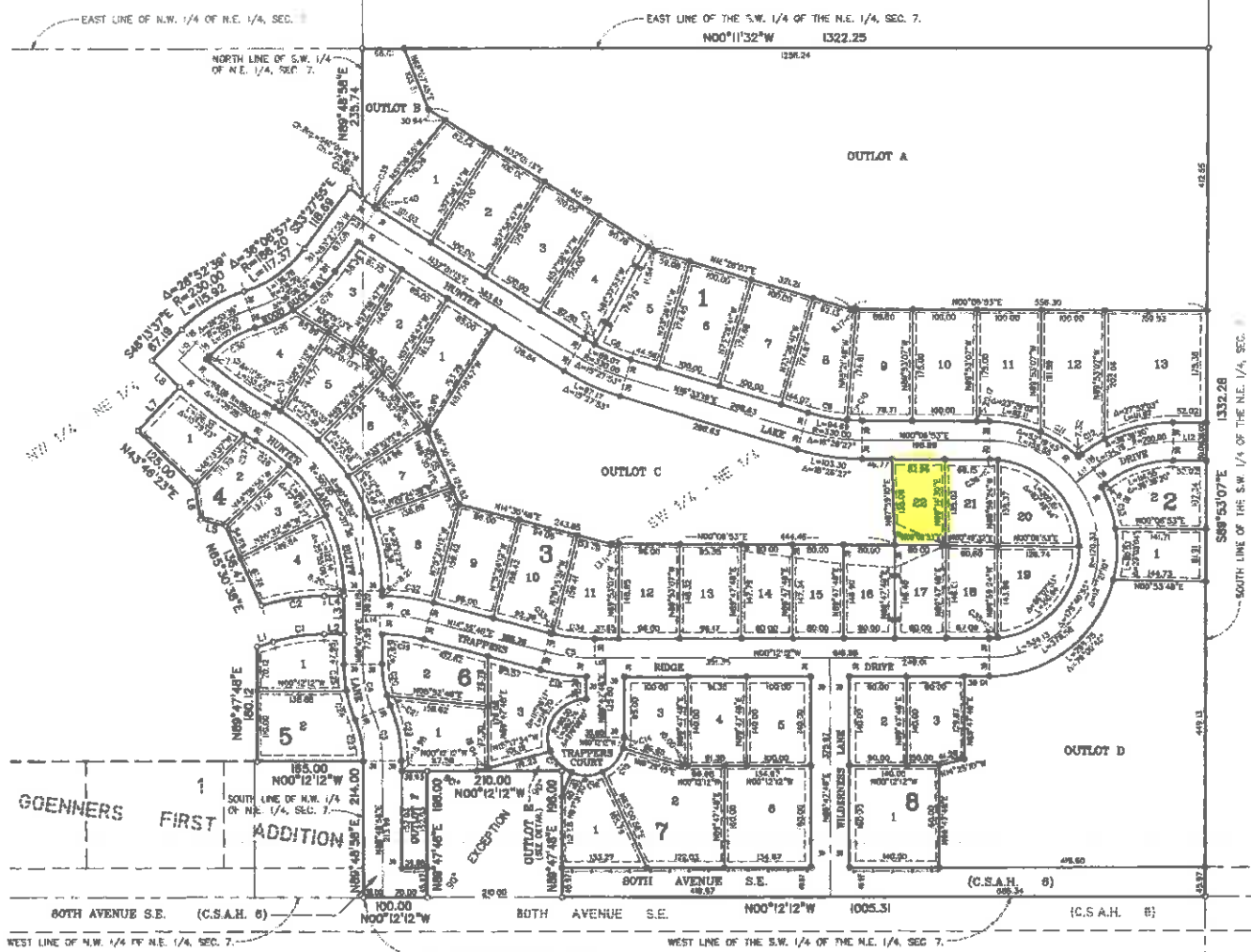
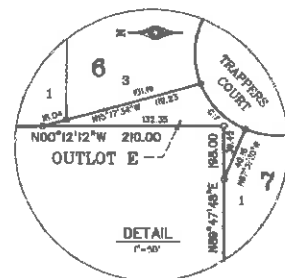
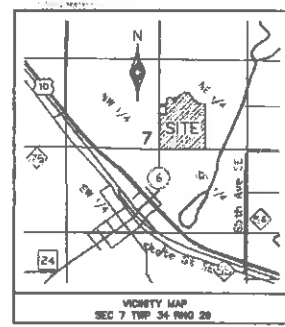


HUNTER LAKE BLUFF

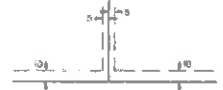


Scale: 1 inch = 100 feet.
For the purposes of this plat, the West line of the S.W. 1/4 of N.E. 1/4, Sec. 7, T. 34, R. 79, is assumed to bear North 00°12'12" West.

- Denotes 1/2 inch x 14 inch iron monument set with a plastic plug stamped R.L.S. 21729.
- Denotes 1/2 inch x 14 inch iron monument with a plastic plug stamped R.L.S. 21729, to be set within 1 year of recording this plat.
- Denotes iron monument found.
- Denotes Limited Access



Drainage and Utility Easements are shown thus:



Being 10 feet in width and adjoining right-of-way lines, also being 5 feet in width and adjoining lot lines, unless otherwise indicated, as shown on the plat.

LINE	LENGTH	BEARING
L1	28.18	S17°38'37"E
L2	30.00	S89°53'07"E
L3	30.00	S89°53'07"E
L4	30.00	S89°53'07"E
L5	30.00	S89°53'07"E
L6	30.00	S89°53'07"E
L7	30.00	S89°53'07"E
L8	30.00	S89°53'07"E
L9	30.00	S89°53'07"E
L10	30.00	S89°53'07"E
L11	30.00	S89°53'07"E
L12	30.00	S89°53'07"E
L13	30.00	S89°53'07"E
L14	30.00	S89°53'07"E
L15	30.00	S89°53'07"E
L16	30.00	S89°53'07"E
L17	30.00	S89°53'07"E
L18	30.00	S89°53'07"E
L19	30.00	S89°53'07"E
L20	30.00	S89°53'07"E
L21	30.00	S89°53'07"E
L22	30.00	S89°53'07"E
L23	30.00	S89°53'07"E
L24	30.00	S89°53'07"E
L25	30.00	S89°53'07"E
L26	30.00	S89°53'07"E
L27	30.00	S89°53'07"E
L28	30.00	S89°53'07"E
L29	30.00	S89°53'07"E
L30	30.00	S89°53'07"E
L31	30.00	S89°53'07"E
L32	30.00	S89°53'07"E
L33	30.00	S89°53'07"E
L34	30.00	S89°53'07"E
L35	30.00	S89°53'07"E
L36	30.00	S89°53'07"E
L37	30.00	S89°53'07"E
L38	30.00	S89°53'07"E
L39	30.00	S89°53'07"E
L40	30.00	S89°53'07"E

CURVE	LENGTH	WADSWORTH	DELTA
C1	18.50	170.00	17.00
C2	18.50	170.00	17.00
C3	18.50	170.00	17.00
C4	18.50	170.00	17.00
C5	18.50	170.00	17.00
C6	18.50	170.00	17.00
C7	18.50	170.00	17.00
C8	18.50	170.00	17.00
C9	18.50	170.00	17.00
C10	18.50	170.00	17.00
C11	18.50	170.00	17.00
C12	18.50	170.00	17.00
C13	18.50	170.00	17.00
C14	18.50	170.00	17.00
C15	18.50	170.00	17.00
C16	18.50	170.00	17.00
C17	18.50	170.00	17.00
C18	18.50	170.00	17.00
C19	18.50	170.00	17.00
C20	18.50	170.00	17.00
C21	18.50	170.00	17.00
C22	18.50	170.00	17.00
C23	18.50	170.00	17.00
C24	18.50	170.00	17.00
C25	18.50	170.00	17.00
C26	18.50	170.00	17.00
C27	18.50	170.00	17.00
C28	18.50	170.00	17.00
C29	18.50	170.00	17.00
C30	18.50	170.00	17.00
C31	18.50	170.00	17.00
C32	18.50	170.00	17.00
C33	18.50	170.00	17.00
C34	18.50	170.00	17.00
C35	18.50	170.00	17.00
C36	18.50	170.00	17.00
C37	18.50	170.00	17.00
C38	18.50	170.00	17.00
C39	18.50	170.00	17.00
C40	18.50	170.00	17.00

WEST LINE OF N.W. 1/4 OF N.E. 1/4, SEC. 7.
SOUTH LINE OF N.W. 1/4 OF N.E. 1/4, SEC. 7.
N.W. CORNER OF THE S.W. 1/4 OF THE N.E. 1/4, SEC. 7, T. 34, P. 29. ALSO THE S.W. CORNER OF THE N.W. 1/4 OF THE N.E. 1/4, SEC. 7.

WEST LINE OF THE S.W. 1/4 OF THE N.E. 1/4, SEC. 7.