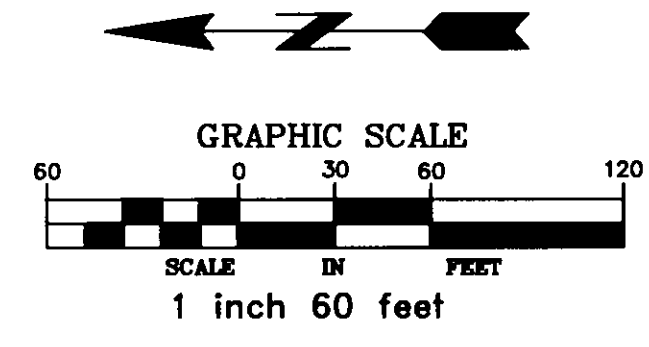


HILLSIDE FARM 3RD ADDITION

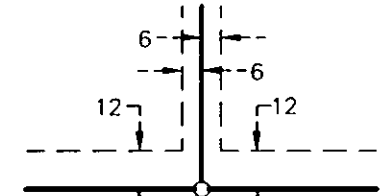
NOTES:

FOR THE PURPOSES OF THIS PLAT THE NORTH LINE OF OULOT B OF HILLSIDE FARM IS ASSUMED TO HAVE A BEARING OF N88°57'39"E.

- - DENOTES 1/2 INCH BY 14 INCH IRON PIPE MONUMENT MARKED WITH A PLASTIC CAP INSCRIBED "RLS 10947" THAT WILL BE SET WITHIN ONE YEAR OF RECORDING THIS PLAT
- - DENOTES MONUMENT FOUND

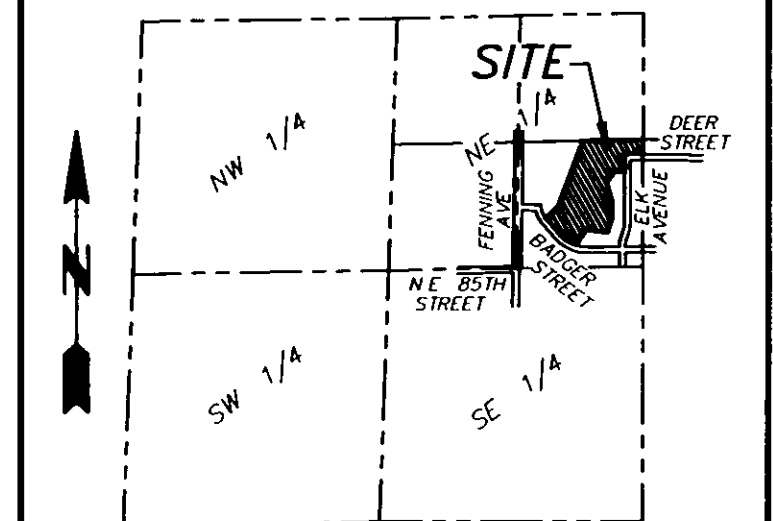


DRAINAGE AND UTILITY EASEMENTS ARE SHOWN THUS:



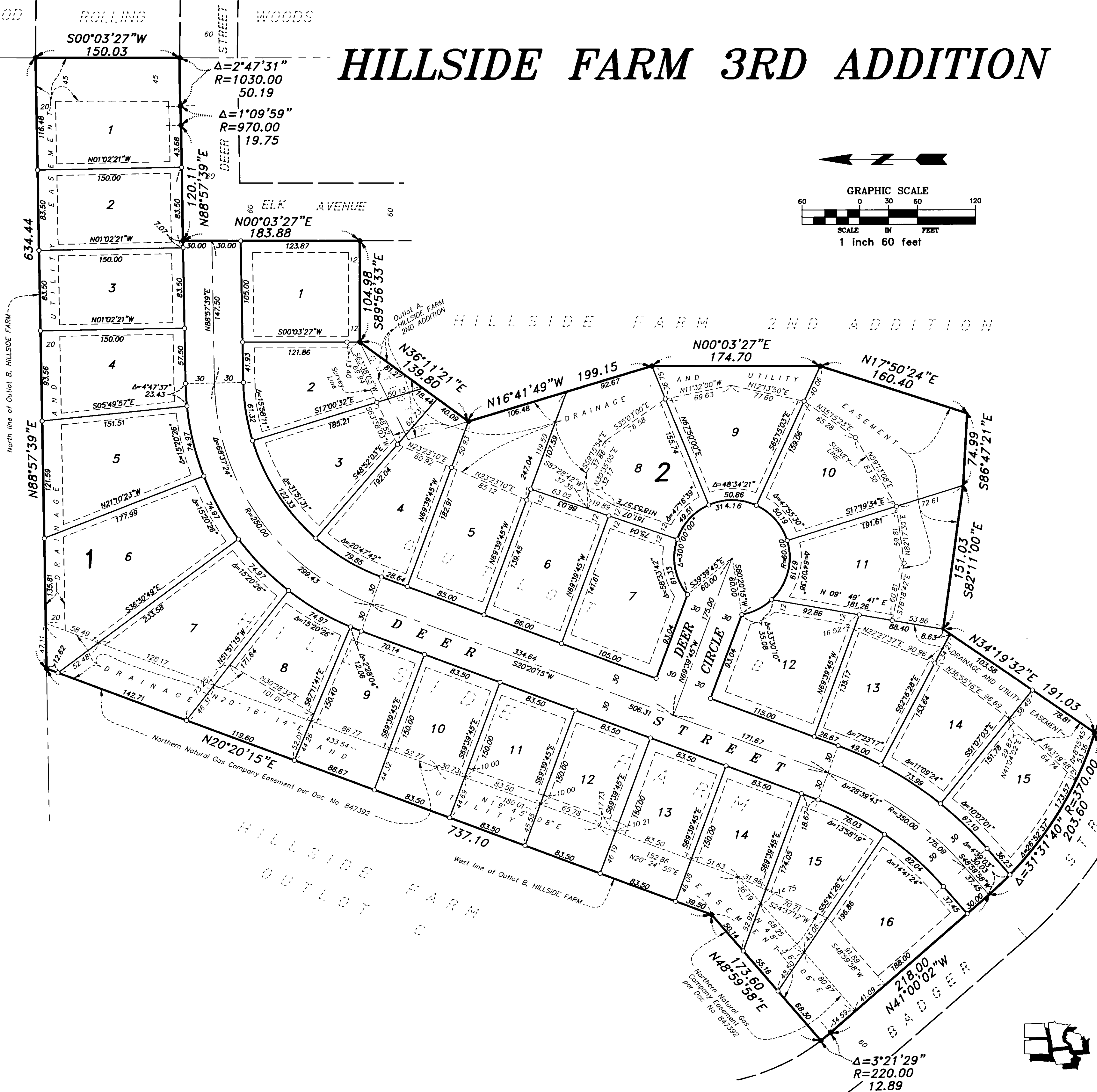
BEING 6 FEET IN WIDTH AND ADJOINING LOT LINES, AND 12 FEET IN WIDTH AND ADJOINING RIGHT-OF-WAY LINES, UNLESS OTHERWISE SHOWN ON THE PLAT.

VICINITY MAP



SEC. 24-T121N-R25W
WRIGHT COUNTY, MINNESOTA
(Not To Scale)

SPIRIT HILLS



WILDWOOD RIDGE

ROLLING
S00°03'27"W
150.03

60 STREET

WOODS

$\Delta=2^{\circ}47'31''$
 $R=1030.00$
50.19

$\Delta=1^{\circ}09'59''$
 $R=970.00$
19.75

1
N01°02'21"W
150.00

2
N01°02'21"W
150.00

3
N01°02'21"W
150.00

4
N01°02'21"W
150.00

5
N01°02'21"W
150.00

6
N01°02'21"W
150.00

7
N01°02'21"W
150.00

8
N01°02'21"W
150.00

9
N01°02'21"W
150.00

10
N01°02'21"W
150.00

11
N01°02'21"W
150.00

12
N01°02'21"W
150.00

13
N01°02'21"W
150.00

14
N01°02'21"W
150.00

60 ELK AVENUE
N00°03'27"E
183.88

1
S00°03'27"W
123.87

2
S00°03'27"W
121.86

3
S00°03'27"W
122.35

4
S00°03'27"W
122.35

5
S00°03'27"W
122.35

6
S00°03'27"W
122.35

7
S00°03'27"W
122.35

8
S00°03'27"W
122.35

9
S00°03'27"W
122.35

10
S00°03'27"W
122.35

11
S00°03'27"W
122.35

12
S00°03'27"W
122.35

HILLSIDE FARM 2ND ADDITION

N00°03'27"E
174.70

9
N00°03'27"E
174.70

8
N00°03'27"E
174.70

7
N00°03'27"E
174.70

6
N00°03'27"E
174.70

5
N00°03'27"E
174.70

4
N00°03'27"E
174.70

3
N00°03'27"E
174.70

2
N00°03'27"E
174.70

1
N00°03'27"E
174.70

N16°41'49"W
199.15

9
N16°41'49"W
199.15

8
N16°41'49"W
199.15

7
N16°41'49"W
199.15

6
N16°41'49"W
199.15

5
N16°41'49"W
199.15

4
N16°41'49"W
199.15

3
N16°41'49"W
199.15

2
N16°41'49"W
199.15

1
N16°41'49"W
199.15

DEER STREET

N17°50'24"E
160.40

N17°50'24"E
160.40

N20°20'15"E
119.60

10
N20°20'15"E
119.60

9
N20°20'15"E
119.60

8
N20°20'15"E
119.60

7
N20°20'15"E
119.60

6
N20°20'15"E
119.60

N36°11'21"E
139.80

11
N36°11'21"E
139.80

10
N36°11'21"E
139.80

9
N36°11'21"E
139.80

8
N36°11'21"E
139.80

7
N36°11'21"E
139.80

N47°16'39"W
172.00

12
N47°16'39"W
172.00

11
N47°16'39"W
172.00

10
N47°16'39"W
172.00

9
N47°16'39"W
172.00

8
N47°16'39"W
172.00

N34°19'32"E
191.03

13
N34°19'32"E
191.03

12
N34°19'32"E
191.03

11
N34°19'32"E
191.03

10
N34°19'32"E
191.03

9
N34°19'32"E
191.03

N20°20'15"E
119.60

10
N20°20'15"E
119.60

9
N20°20'15"E
119.60

8
N20°20'15"E
119.60

7
N20°20'15"E
119.60

6
N20°20'15"E
119.60

N36°11'21"E
139.80

11
N36°11'21"E
139.80

10
N36°11'21"E
139.80

9
N36°11'21"E
139.80

8
N36°11'21"E
139.80

7
N36°11'21"E
139.80

N47°16'39"W
172.00

12
N47°16'39"W
172.00

11
N47°16'39"W
172.00

10
N47°16'39"W
172.00

9
N47°16'39"W
172.00

8
N47°16'39"W
172.00

N34°19'32"E
191.03

13
N34°19'32"E
191.03

12
N34°19'32"E
191.03

11
N34°19'32"E
191.03

10
N34°19'32"E
191.03

9
N34°19'32"E
191.03

N20°20'15"E
119.60

10
N20°20'15"E
119.60

9
N20°20'15"E
119.60

8
N20°20'15"E
119.60

7
N20°20'15"E
119.60

6
N20°20'15"E
119.60

N36°11'21"E
139.80

11
N36°11'21"E
139.80

10
N36°11'21"E
139.80

9
N36°11'21"E
139.80

8
N36°11'21"E
139.80

7
N36°11'21"E
139.80

N47°16'39"W
172.00

12
N47°16'39"W
172.00

11
N47°16'39"W
172.00

10
N47°16'39"W
172.00

9
N47°16'39"W
172.00

8
N47°16'39"W
172.00

N34°19'32"E
191.03

13
N34°19'32"E
191.03

12
N34°19'32"E
191.03

11
N34°19'32"E
191.03

10
N34°19'32"E
191.03

9
N34°19'32"E
191.03

N20°20'15"E
119.60

10
N20°20'15"E
119.60

9
N20°20'15"E
119.60

8
N20°20'15"E
119.60

7
N20°20'15"E
119.60

6
N20°20'15"E
119.60

N36°11'21"E
139.80

11
N36°11'21"E
139.80

10
N36°11'21"E
139.80

9
N36°11'21"E
139.80

8
N36°11'21"E
139.80

7
N36°11'21"E
139.80

N47°16'39"W
172.00

12
N47°16'39"W
172.00

11
N47°16'39"W
172.00

10
N47°16'39"W
172.00

9
N47°16'39"W
172.00

8
N47°16'39"W
172.00

N34°19'32"E
191.03

13
N34°19'32"E
191.03

12
N34°19'32"E
191.03

11
N34°19'32"E
191.03

10
N34°19'32"E
191.03

9
N34°19'32"E
191.03

N20°20'15"E
119.60

10
N20°20'15"E
119.60

9
N20°20'15"E
119.60

8
N20°20'15"E
119.60

7
N20°20'15"E
119.60

6
N20°20'15"E
119.60

N36°11'21"E
139.80

11
N36°11'21"E
139.80

10
N36°11'21"E
139.80

9
N36°11'21"E
139.80

8
N36°11'21"E
139.80

7
N36°11'21"E
139.80

N47°16'39"W
172.00

12
N47°16'39"W
172.00

11
N47°16'39"W
172.00

10
N47°16'39"W
172.00

9
N47°16'39"W
172.00

8
N47°16'39"W
172.00

N34°19'32"E
191.03

13
N34°19'32"E
191.03

12
N34°19'32"E
191.03

11
N34°19'32"E
191.03

10
N34°19'32"E
191.03

9
N34°19'32"E
191.03

N20°20'15"E
119.60

10
N20°20'15"E
119.60

9
N20°20'15"E
119.60

8
N20°20'15"E
119.60

7
N20°20'15"E
119.60

6
N20°20'15"E
119.60

N36°11'21"E
139.80

11
N36°11'21"E
139.80

10
N36°11'21"E
139.80

9
N36°11'21"E
139.80

8
N36°11'21"E
139.80

7
N36°11'21"E
139.80

N47°16'39"W
172.00

12
N47°16'39"W
172.00

11
N47°16'39"W
172.00

10
N47°16'39"W
172.00

9
N47°16'39"W
172.00

8
N47°16'39"W
172.00

N34°19'32"E
191.03

13
N34°19'32"E
191.03

12
N34°19'32"E
191.03

11
N34°19'32"E
191.03

10
N34°19'32"E
191.03

9
N34°19'32"E
191.03

N20°20'15"E
119.60

10
N20°20'15"E
119.60

9
N20°20'15"E
119.60

8
N20°20'15"E
119.60

7
N20°20'15"E
119.60

6
N20°20'15"E
119.60