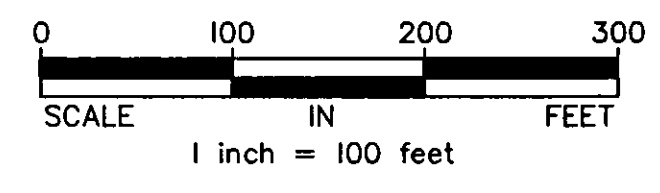
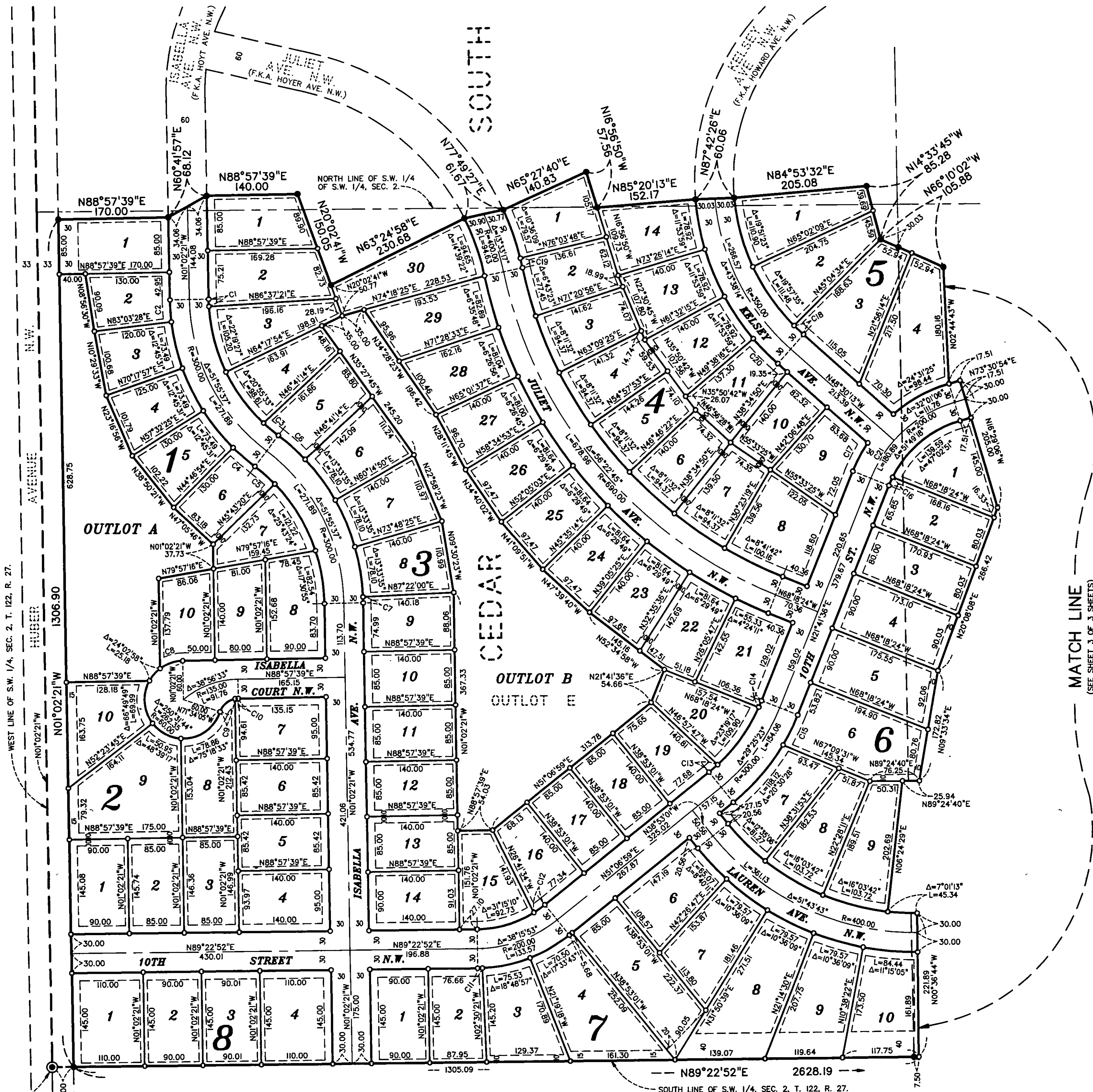
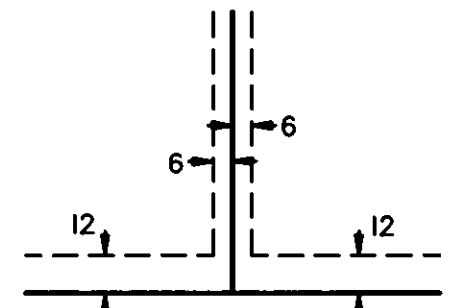


CEDAR SOUTH SECOND ADDITION



Drainage and Utility Easements shall be shown as thus:



Being 12 feet in width and adjoining right-of-way lines, unless otherwise indicated, also being 6 feet in width and adjoining lot lines, unless otherwise indicated, as shown on the plat.

For the purposes of this plat, the West line of the S.W. 1/4, Sec. 2, T. 122, R. 27, is assumed to bear North 01°02'21" West.

- Denotes 1/2 inch x 14 inch iron monument with a plastic plug stamped R.L.S. 21729, to be set within 1 year of recording this plat.
- Denotes Iron Pipe Found

CURVE	LENGTH	RADIUS	DELTA
C1	11.02	270.00	2°20'18"
C2	34.00	330.00	5°54'12"
C3	29.87	270.00	6°20'19"
C4	44.62	330.00	7°44'52"
C5	40.94	270.00	8°41'18"
C6	55.60	330.00	9°33'13"
C7	9.18	330.00	1°33'39"
C8	37.37	60.00	35°41'07"
C9	32.05	30.00	61°13'11"
C10	4.87	30.00	9°18'33"
C11	7.57	230.00	1°53'13"
C12	20.81	170.00	7°00'43"
C13	17.77	270.00	3°46'18"
C14	10.98	270.00	2°19'48"
C15	51.35	330.00	8°54'55"
C16	14.17	170.00	4°46'27"
C17	49.41	230.00	12°18'31"
C18	19.99	320.00	3°34'47"
C19	15.08	430.00	2°00'32"
C20	54.00	380.00	8°08'29"
C21	69.13	200.00	19°48'12"

S.W. CORNER OF THE S.W. 1/4, SEC. 2, T. 122, R. 27, A WRIGHT COUNTY MONUMENT.